

RARE (54)

Stirpes cryptogamae (Vogeso-
Rhenanae). Vol. 4. 1813.

B-10122

Brittle and Fragile

Rare

(54)

STIRPES CRYPTOGAMÆ

VOGESO - RHENANÆ

QUAS

IN RHENI SUPERIORIS INFERIORISQUE, NEC NON
VOGESORUM TRAFECTURIS

COLLEGERUNT

J. B. MOUGEOT Brayeriensis Med. Doct et C. NESTLER Argentinensii.
Pharin. SchoJ. Pharni, Argent' Pcof, adj.



—DEUS O. M. et natura nihiil finistra creavcrit.
Posteros tameu tpt invcnluros fore militates ex muscis-
auguror, quot « reliqub Tegetabilibos. —

Linn. Cul bono ? Aman, Acad. tom. III p. 2ft.

FASCICULUS IV.

Indian Botanic Garden Library
BOTANICAL SURVEY OF INDIA

CLASS No
BOOK No. STI-C
ACC. NO. B-10,122





ISHE* SISTENS SPECTRUM NOMINA FASCICULI IV'

	No.		No.
<i>Æcidium Tragnpogi Pers.</i>	388.	<i>Oj g p ha sulcata Pers.</i>	360.
<i>Æcidium UriCIL* De C tintj,</i>	389.	<i>Oilliniichum ifline Schrad,</i>	323.
<i>Arthnnia radiata h, astroiaett Achar.</i>	362.	<i>Oniioirichum diaplitmuoj Schrad.</i>	325.
<i>A5]Hciimm LrmchilLis Snarl L.</i>	30/	<i>Or(hotr[c]min puinilinti . . .</i>	322.
<i>Asploiiium viride Stud.</i>	305.	<i>OrdlolncUum Urialtun Hedw.</i>	324.
<i>Bothnia tortaosa Urdu:</i>	3ii.	<i>Pariiiulia coiioptM yhlmr.</i>	347.
<i>Enrtrnmia CE*IPH Brtd,</i>	326.	<i>Parmelia encaiuUi vll'har.</i>	355.
<i>Calicium turbinatum Pers.</i>	365.	<i>Parmelia fjdilaaeDsiB sfchar.</i>	35 o.
<i>(Hi niriilari.i lafiOta -/< lu:r.</i>		<i>Parmelia glomulifera jichar.</i>	346.
<i>Corcicularia pubfswns -!har.</i>	558.	<i>P.trmeia Odijihalodrs Achar.</i>	348.
<i>Dicriiiniij longifoHum Ik-lv.</i>	Tii.4.	<i>Parmdia pit^rea jichar,</i>	322.
<i>Dicraimm polysetura Snariz.</i>	316.	<i>Pa . . . saxatills s-it Imr.</i>	349.
<i>13icxaaazn Scirfidcrj // i-i: ct Uohr</i>	317.	<i>Parmelia st . . . Achar.</i>	321.
<i>Dicrantim BCHToids StPortc.</i>	321.	<i>Prllidra lioriaontalts Achar.</i>	319.
<i>JOicranum spuriint ll\du\</i>	319.	<i>Pezua AbipiJ5 Pers,</i>	320.
<i>DicraQnm squarrosnm Si'rad.</i>	320.	<i>Pezizn amarplta Pers.</i>	327.
<i>D i jiloCfuiiiiii lini>isetiiriL // eb.it Mcfi</i>	327.	<i>Tr;7a luberosa Bull.</i>	302.
<i>Eqiiseiim hyeraale I Ann.</i>	301.	<i>P'liasciim euspidaiim If<,l.:</i>	355.
<i>E(huiseLPm Tarlegatura S\ hleich,</i>	361.	<i>Pterogoninra struttom lledu:</i>	312.
<i>}'A'T]lia pruoasLri jichar,</i>	310.	<i>Paccinia A^paragi De i'and.</i>	310.
<i>Graphia pulverulenta jichar.</i>	311.	<i>Pyrenola aiuda , (char.</i>	309.
<i>Grimmia ciuiui Jirid,</i>	309.	<i>Radi ai mpslre fr;1,?.</i>	308.
<i>Grimmia lanceolata Schrad.</i>	308.	<i>Ramalina fonoacca sikhar,</i>	307.
<i>Crimtnia oTata Hedn\</i>	307.	<i>Sclerotium piijiiliteiirn Pers,</i>	306.
<i>Gymnostomum Lapponicum Hedw.</i>	306.	<i>Sderouura salicnurai jper*.</i>	305.
<i>Gymnostomum ovatum Ihdn'.</i>	305.	<i>Sphceria decorticaits Pers.</i>	304.
<i>Gj p ha heteroida Achar.</i>	304.	<i>Sp aeria ferraginta Prr\$.</i>	303.
<i>GjTophora hinula jichar.</i>	303.	<i>Spfaeria Diivo-\injis Nrs.</i>	302.
<i>Cr\ royhrn pellttB sfrhar.</i>	302.	<i>S[>li;ir]a gxtomon Pen,</i>	301.
<i>Hipin ri enr^itjiu &vari z.</i>	301.	<i>Sphceria mtmneformia Per*.</i>	300.
<i>H¹ paum intrir turn Si . . . i.</i>	300.	<i>Splia'liii uicrln, . . .</i>	299.
<i>11; [libra Intescere . A hreb.</i>	299.	<i>Sj]li: iij anmmul H ia Dc CattJ.</i>	298.
<i>U}'poan niv<>sur<jidM. Lism.</i>	298.	<i>Sphtena prunastit J'rrs.</i>	297.
<i>H_y_p_u_m serpents ,ffl«.</i>	297.	<i>Sili;iri; juilvis j.MJis Pers.</i>	296.
<i>JJ¹ j' " no > el. turn Ehrh.</i>	296.	<i>S] liaria spiaosa P'rs.</i>	295.
<i>JJ^jntijn tijiein,ttini Hedw.</i>	295.	<i>Spli . . . stigmai P*rs.</i>	294.
<i>JJ v si. . . iiii.i graraiafTun Pns.</i>	294.	<i>Sphaeria undulata Pers.</i>	293.
<i>Hysteritnn gaercioinn Prm,</i>	293.	<i>Sulbospora macrosperma Pers.</i>	292.
<i>Jungensaiaaia asploujoides Lum.</i>	292.	<i>Sulbospora microsperma Pers.</i>	291.
<i>Jimgermamna bicupidata XAJE.</i>	291.	<i>Thelophora Or, ginea / De I.C.W.</i>	290.
<i>Juogennanata complanata Linn.</i>	290.	<i>Trend fa spicuJosa Per*.</i>	289.
<i>Juugertann a laevi^ata Schrad.</i>	289.	<i>Trmwlla C rtier Pert.</i>	288.
<i>Juugermannia Linn,</i>	288.	<i>Trichostomiitii microcarpon Brid.</i>	287.
<i>Juugermannia ondukta Xinn.</i>	287.	<i>TulostouiJ brumai Pers.</i>	286.
<i>Leeimra luiuinta wl< har.</i>	286.	<i>Dredo Empetri y*crs.</i>	285.
<i>Leskea complanata Tunm.</i>	285.	<i>I r<> Tnssil<giais T'rs.</i>	284.
<i>L . . . dium Selaginoids Linn.</i>	284.	<i>Verrucarla rpid<TnkJffi eichar.</i>	283.
<i>ftiarsilea quadrifolia Linn.</i>	283.	<i>\ ei-ruearta sugmstrlb d, ct t Achar.</i>	282.
<i>Merulius cornucopioides Pers.</i>	282.	<i>Xl . . . bfttujoinn JR . . .</i>	281.
<i>Cpegrapha q ipasta sttkar.</i>	281.	<i>Xyloma concentricum Pers.</i>	280.



STIRPES GRYPTEO

VOGESO-HELANA

QUA

IN ANNUO SUBSTITUTIONE...

VOGESO-LIN...

...

...

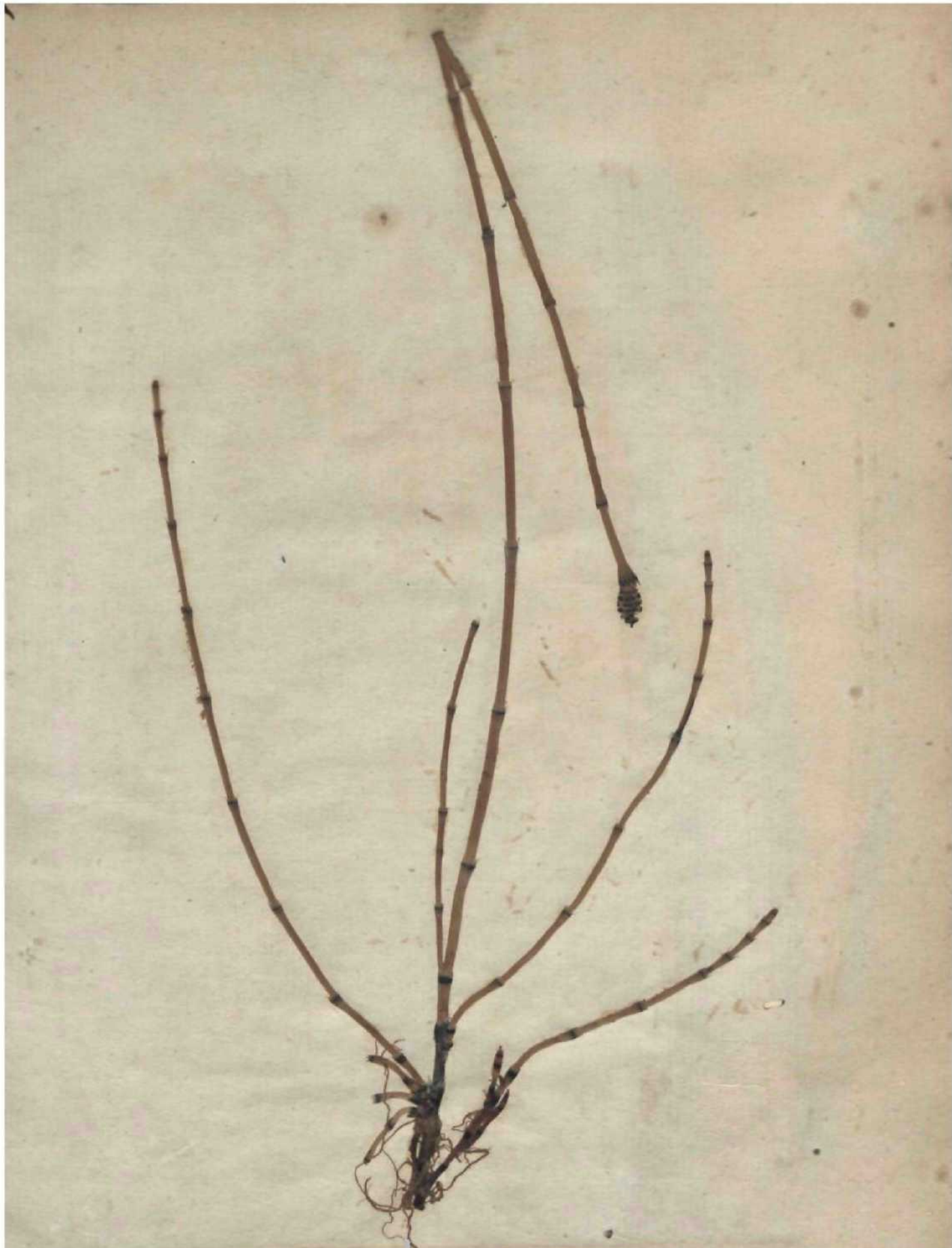
...

...

...

...

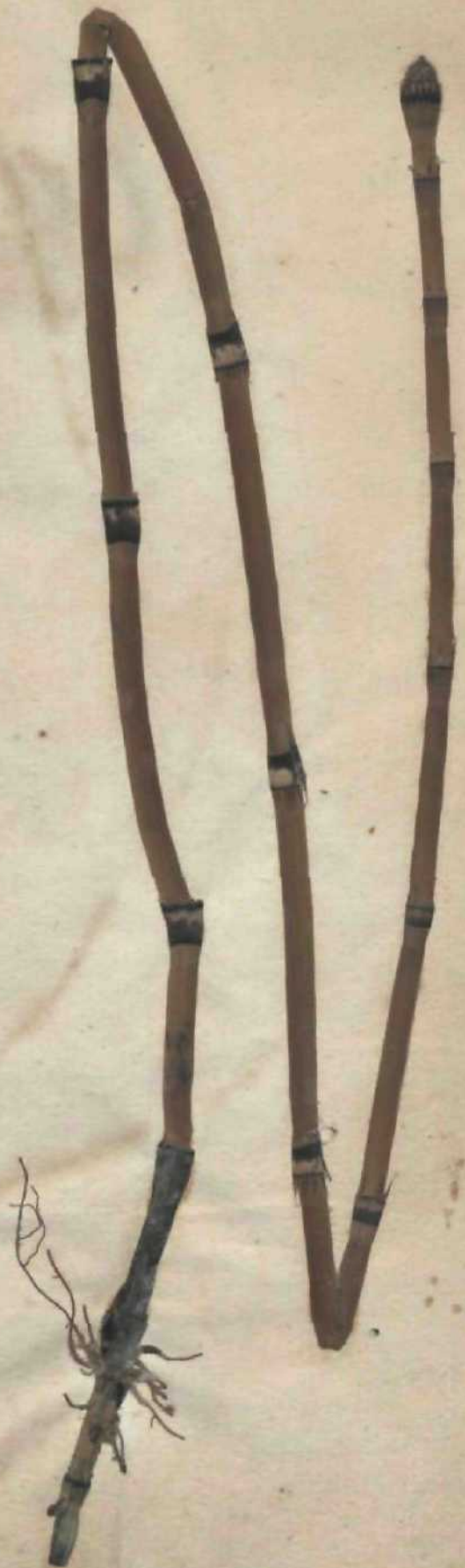
...



30r. Equisanti.nl wftpJfa SrMeirh. H WWd. Sp. pi 5. P. 7-
Equisante w iimoittitu ZH Ccod. Syn. JI.gan. 1% j j
In arenosis ui is Birc* Argentoratun. Augusto
Herbaris.

30H. *Equisetum hyemale* Linn.

Is rjlr* banidu cd ripis B.f«oi, tu^iujo rirra jtrgi'ntoratvm. *Estato.*





303, *Lycopodium Srfuginoides* *Linn*,
In pi>ruu maicoij mentis *Chasseratla* Jviisii. Jatio.



304. *Aspidium Linnæi* Sartz Sjn. *Ffic.* p. 43.

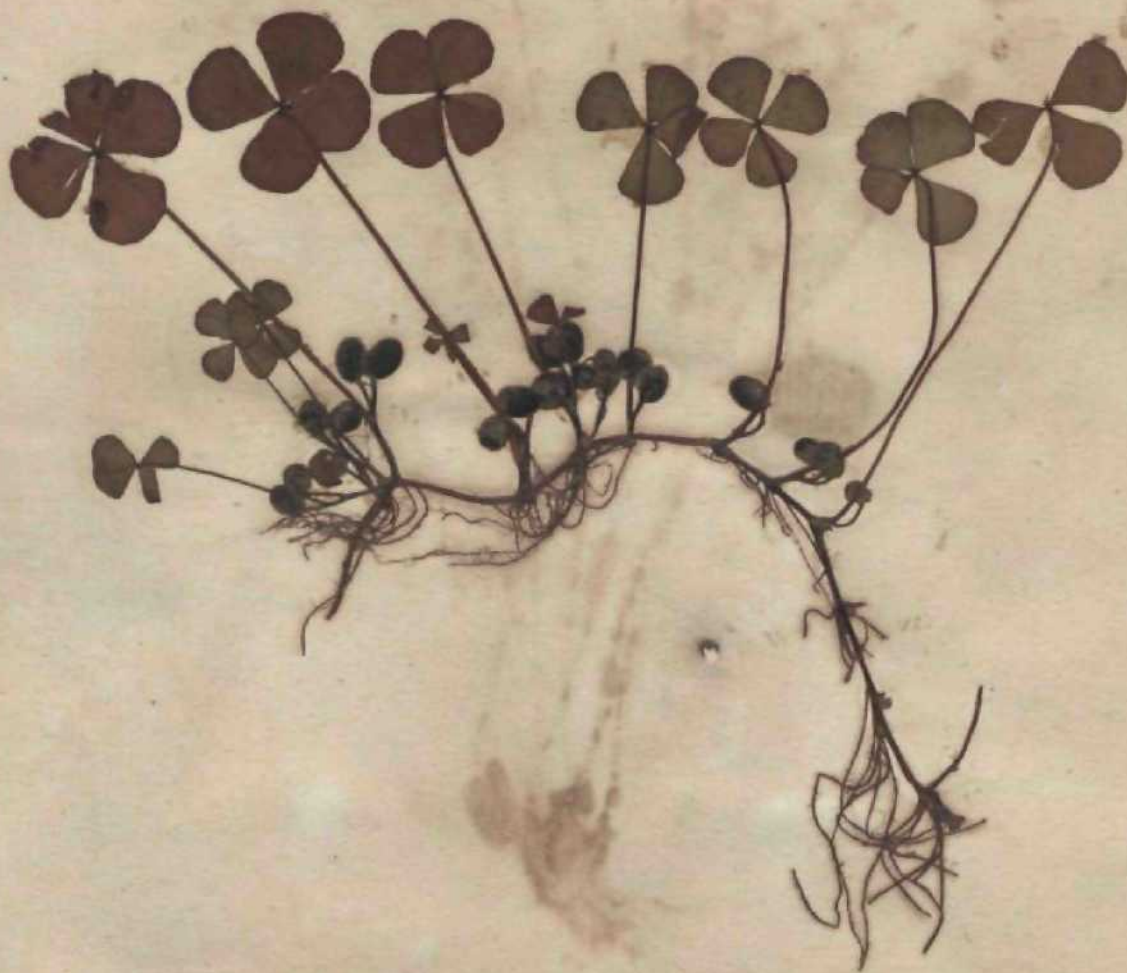
Pofjjedium Lonchitii Zinn.

In præcipuii montis Chom>railE yer>n» ofcamm, nee ocn area
Lacutn viridtm (*Haartnsee*) V(-ge*or<m. JEiUt*.



305. *Asplenium viride* *Huds. Fl. angl. p. 453.*
Ad rupos calcarias vallis *Birsæ* Jurassi. Julio.

30C. *VIarsilfa qurdrifolia Linn,*
ID inumialii circè *jifgrnlpraltjm. coptosr. Septembri.*



3Yj. Ptiastim CTispidaiim J7edu>. Sp> Muse. p. 21.

P'lascum ii.-iulou var. a. Jinn,

Ad rerram pingu<oi la Jmljo'icn's tuuriiqie, prime Var*,

#

308. Gjmnostويم ovntuni *Hcdw. Sp. Muse. p. 31.*

Bryum uvatuin Dicks.

In miins ii^illuui inqtia aggdri^OJ. Aprili,



»
*





•* >



309. *Gymnostomum Lappoii* Bedw- *Stirp. crypt. Z. p. iS. tab. 5.*
Bryum Lappoii Dicks, ex Smith fl. brit. Acertan^{um} Lippom^{cuii} Hedv, Sp. Musc.
i La Hiinris rupiaea moatii Motabac Vtgoiqrum, JunJo Jaiioquo.

31a GnimiMa lanernlaia *Srhrad.*
Bryam Unccolatuni *iMts. Kn«lj[it]» lanceolata Hedw.*
Jo soto lutoiu. Vers.

| ,#

Zll. *Grimmia ovata* Hedw. Sp. Mi/Jtr. StppJ, I. p. 85, tab. 24.

Grimmia montana & Cund. Fl. gall. iatg-

Ad t. i. ni jstpe iixij granitosis Vagesorum. Hyemo.



3 is. Giimn.fa crinitt *Brid, tt Ilcdu. Sp. Muse, Suppl i- p. 9³- iab- 26.*
In muris et lapidibus e»Icir«i* Lcibhriugiee. Autumiio «^l Uyome.

m

313. *Pterogonium stnati* JJidw, Sp. Muse SvppJ. I. p. icZ. lab. 27.
Ad truncos 01 rio-os i'agi Attaints p»udcpUtaiii in jug« Vog<tgium. Æstato.





514. *Barbula tortuosa* Hedw.* *Sp. Musc. Suppl. 1. p. 129. tab. 33.*
Bryum tortuosum Linn. *Tortula tortuosa* Hedw. *Sp. Musc. p. 124.*
Ad rup« calcars n|H, AW,, inque fissuris rupium granitesarum
moat. fio*«ia* «t *Ballon de Servance. Æstato.*



315. *Trichostomum micrncarpon* Brid. *Muscol.* 2. p. 127.

Bryum iij|Hjoirlai var. *d.* Linn.

iii saxis jogi Vugoiomai. Æstate.

516. Dicrnum po5ysetum. Sivnrtz el Uethv. Sp. Muse. Suppl. i. p. i65. tab.4T.

Bryum rugosum Hc n.

fa lircii sylvarum locis. Æstate.





317. *Dicranum Schottleri* *Ip\ b, et Mohr. Crypt, grtn. p. 177,*
Dictanurn ondtlati:oi Sehrad
In lorfojit Vogesorum. Autumnno.

31 & Dicramira lon^ifnlium ffedw. Sp> Muse. p. i30.

Brynin Iengifglium Dicks*

Ad ramoi irbortim ia wjlvh odiliariboi. Auguito «t Sopt«mbri.





319. *Dicranum spurium* Hedw. *fy. Musc. p. 141.*

Bryum spurium Hoffm.

In silvaticis arenosis. Ætate.





320. *Dicranum squarrosum* Schrad, cf *Brflw. Sp. Muse Supph* i. p. 13a. tab, 47.

ilryuBB pflucidum vw. i. Linn.

In paludosis et ad scaturigines montium praesertim in praeruptis Montibus,
Millon de Servance. Autumno.

Sat. *Dicranum sciuroid* « *Styartz Muse, frond Suer. p. 32.*

Hypnum sciuraides t.iaa. Fiuideai srititoidet Hedw.

Ad iirbofum it uncus, Hyemo at primo Ver.



3*2. Oilbou-ichom pumilura *Suurtz Muse, frond. Suec.p.* 4* '«*• 4-/ff- 9-
In coitice *rlioruin. V«ro.



t

325. Orthotridum affine S-hrad. SpLcil p. C7.
BryniH affine Gnift.
la arboribm rupibusque. Estate.



3*4- Orthotrichom strimra *Htdiv. Sp. Muse. p. 163.*
Brynm urisiam *vtir. a. Sum.*
Ad ciadicei at ramoi arborum. Vere et ~~Æ~~stato.



3a5. *Oriliorfctiim diaphanum* *tSchrad. Spirit, p. 69.

*Brysa dial*hjprD CMtel.*

I a *zbvrihos rromwcuij com Ontigr. pnnilo. V<*

#

*

326. *Bartramia CECleri* Brld. *Muscol* 4. p. i35.
Brynm CE'leni Rttz. B»Hr*mit grarilis Flark.
Ad rgpei ra'caria» villis *Bint.* Juiio.



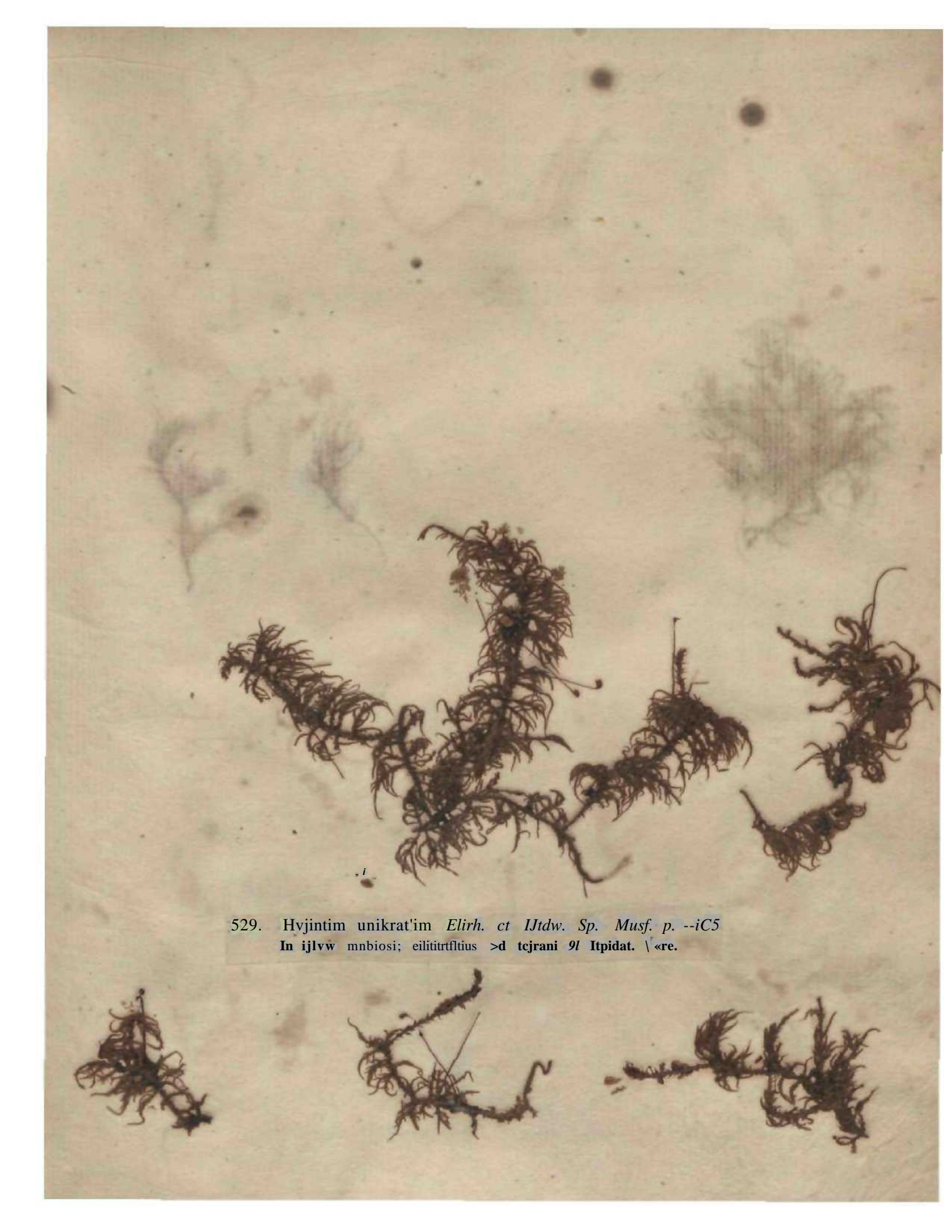


527. *Diplocomium longuetum* Wsb, et *Mofir Cnjit. germ, p, 3; 4*
Ulnium trijuflluoi Linn. *Mo«ia longueta tis<iw.*
In torfaceis mont. Chasseralle at pnlii lunV)* f-irc* *Bt 'lyenum. Joniu Julioqw*

328. *Listeris corniculata* W 77mm. et *Sedw. Sp. ? > lusc.* ;

Ad herbis truncos, raro com thccis. Aprili et Maio.





529. *Hyjintim unikat'im Elirh. ct IJtdw. Sp. Musf. p. --iC5*
In ijlw mnbiosi; eilitirtftius >d tejrani 9l Itpidat. \<re.



330. Hypnum rayoreroidea Linn.

Vulgare in sylvis abiegnis ad saxa et arborum trancos circa Bruyerium. Vera.





a.



b.



3JJ. *JlypriTim* corvatura *Stvartz Muse, fraud. Snec. p. 64.*

Hypomn myaiuroidei Htdvt, HypBUB myurim />(j/;

*Ju rapibus et Arbomm (runni s^ylvani Ill montQi»rum, V*ro.*

Variat larctihi crassiuribuj a. et HtleDUiii b.*

332. Uypnum scrprns *Linn.*
Ad tar ram, lapidoj , lignaque psliciJi, Æstato.



2*53. Hypirain iu erica fa m *Srhrcb, ft Hcdw. Sp, Muse. p. 271.*
Ad m.~~ic~~BJ trbgrum \ or?.



'V.





Z7>4- *Hrjmnm hilescetis* *Srhreb. rt ITcdw. Sp. Muse. p. 274*
in *lopibc** *inijio luri** »*iccis ijTirnm* »*il\ ttrfitn. V«e.*

-S35. Hypniim tincinawm Be<hv. Sp. Muse. p. 289.

~~in~~ ~~state.~~





336. *Juncus maritima* undid at n *Linn.*
ALH J*ntd*i* in rivulii. ilaiu.



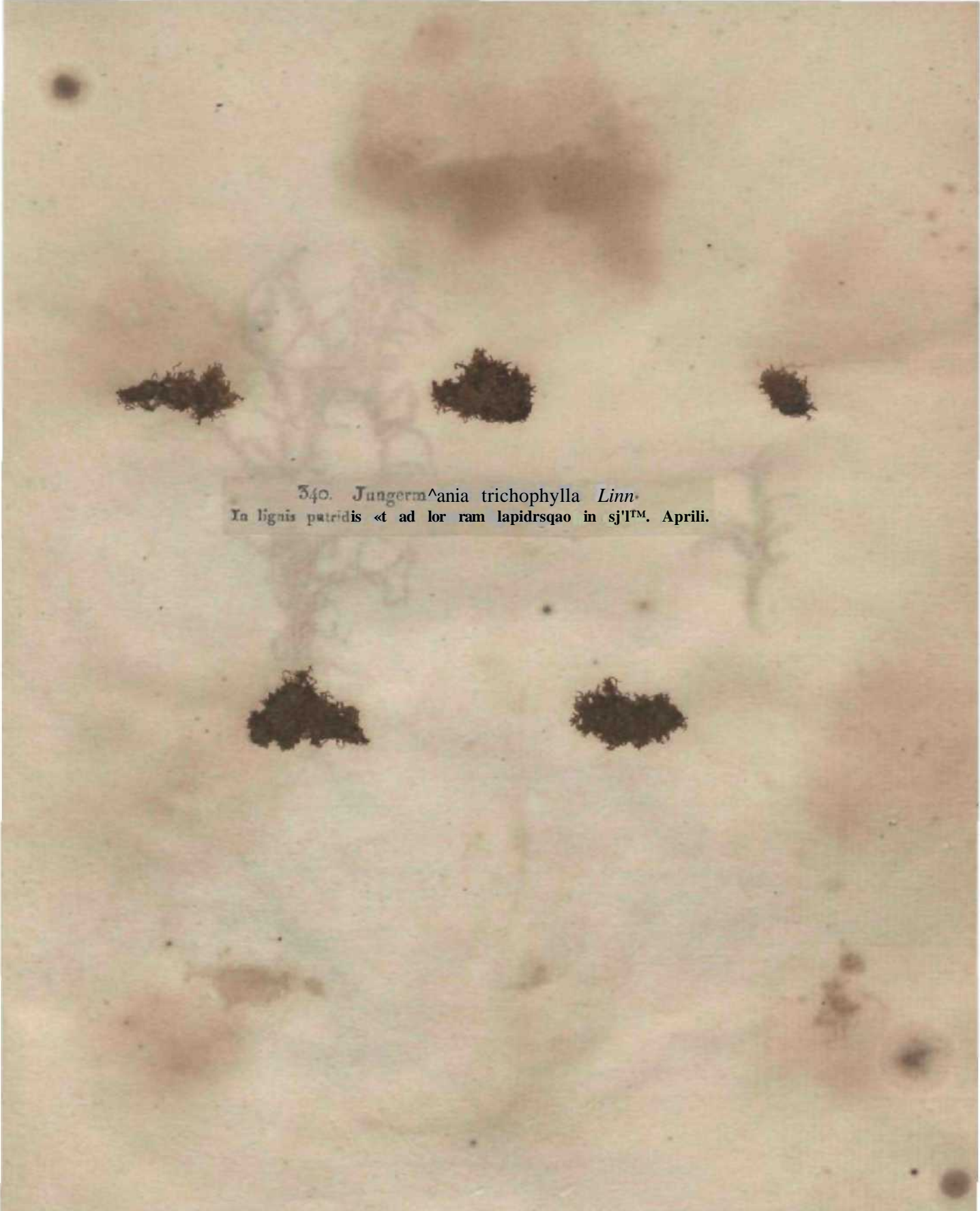
337. Jtingprmannia l>iaispld;ita *Linn.*
In »j»i» •tabroiii liuuidii^aa id [•rritn. April.

338. *Jungernnnia asplenoides* Linn.
*In udis *jliſ>Ti;m. Maio.*





33j- *Jmigermannfa complnnata* *Linn.*
Ai trboruoi truDcoj. Jlyema.



340. *Jungerm[^]ania trichophylla* Linn.
In lignis patridis «t ad lor ram lapidsqao in sjlTM. Aprili.



341. Jungermanni.1 [arigau JrA,W. i« IV, h. ?t TJohr *Crypt. germ. p. 398.*
ID ijlvii »d lerram, hucntigni tlt^aa capsulis.


m

342. Gyrop! ira Weroidm *Abhor. Lick. timV, p. 218,*
Lichen polyphjilm Zt'm. Lirh,n ^iLor jdlitr. Protr.*

Thallus L?ch. potypfijUi tilt, el -Lich. gl»bri .^cAd/. Ian niSa m^phus,
nt var i»tar« AobwfUail a. ot 6. Gyraph. Jieiarjid^f ris dliC4raa» Uoawit,

343. Gyrophora pellita *Achar Lich. univ. p. 228.*
Lichen pellitus *Achar. Prodr. Umbilicaria pellita De Cand.*
Ad saxa et rupes.





344. *Gyrodontia hirsuta* Jfrhar. *Lich. unia.* p. 130.
Umbilicari« L'nan //1/TF*. e* >7*rfe ilcriin- »l%\$t*. t8io. y 66.
In rupibus lummii mom. JJuhntck at oltek Ltuntm *viridem.*



346. *Parmella glomnllfeta* Achar. *ti^k, nm'v. p. 466.*
t ichan logi^ll^ghtf, L^ifrt gteowlifwmjB, cand. Ft. gal! 1993
Ad irboroai trance in rylrii flditioribai moot, ^ . j ^ ^ ei Rotabac.

^47- Par:nelia cmtqplcai Achar. Lich, unv. p. 467.

Lichen 00Tilpl«oi Petiovu,

Xa trdncli Krbarnai prrsartim Ptgi tA gr»! iylvaruu.



3|R. Pa rnel I a. ompii;iln<T^s sichar. Llch. utifo. p. 469.
Li, h « oa>p<i*iodes /i'm. Imbricari* adajri Z» Canrf. J^, sal Lt>Si-
Ad ctentostt montium in tutii.

349. Pa-mfllla saiatilis *ffckar. Lirh. unit; p. 469.*
JJehma tftiitili tin*, Imbririria ronrug* Di Cani, i?y. gall. 1054.*
Vulgaru id *saxa.*



#

35o, Parmⁱ;! falilia^{nsis} Achar. Lich. «W. p, 470, **m**
Lichen fatilojioiun Linn [mhriuru FajlQOf* Dm CantL Fi gt,/(,
Ifi tuu .props £acu_m sn, id«t». tt rugnan,



351. *Parma elia* Ach&r. *Lich. unit'*, p. 471.

Lichen typus 4000

Habitat lupra in finibus loci cum praecedenti.

35a, *Parmelia ptyrreoides* (L.) Ach. 483.
Parmelia ptyrreoides Achar. Prodr. Lithantrum Lawk. *Parmelia ptyrreoides* D* Cand.
Ad *Parmelia ptyrreoides* rarietate cum apotheciis.

0^3. *Farm? Via tjcatiSUR Achnr. IJ>h unit?, p. jf9.*
Lichen eaiuini Smith. Imbrirjrii encansia D Catid, l-l. gail. 1069.*
Lic-h«n im«iimfonim Wilh> ex ejj« bvrbuHo.
*Xa i*xit ypgeioruni cgptjso orra oatm pA*totia:u Tanacho dictam.*



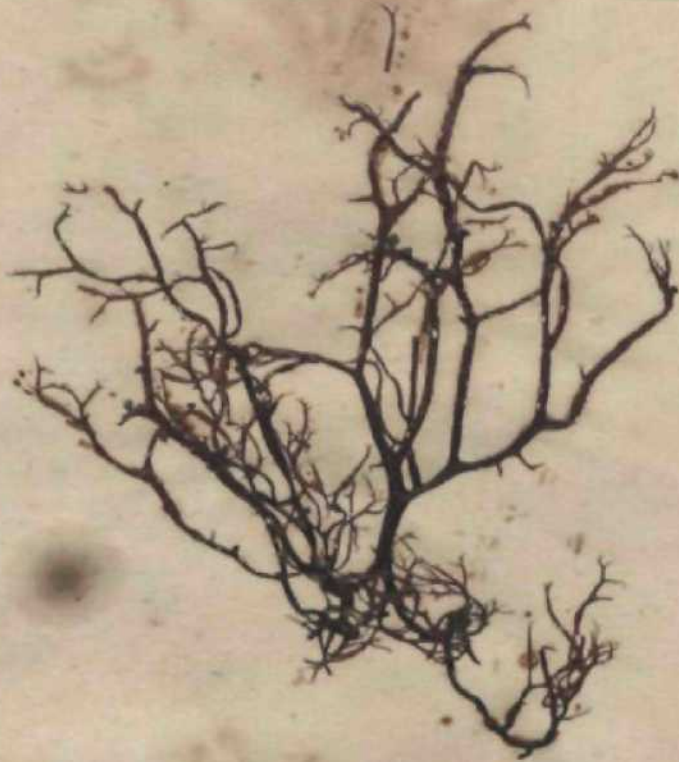
34. Lecanora miniate Arhar, Lich. urn*, p. 4.
Lichen miofaiu. Hojfn. Pl.roJjum olegi- ? Dt Caad, 1 gaU, 1926.
In cautibus siliceis, tegulis, et aliis » apud carios.



355. *Evenia prutiastri* Aokar* *Lirh, uniw p. .\.*J2.
Lichen prnaitri *Linn. Ph y«φ» prnniilri Da Ca/td, IL £<.ul, 1075.*
Ad rsmoi iiborum.



356. *Rhizaria farina* strhor. Lich amV. l>. Gc*.*
*Lich«o f*ris»«ui linn. Physcia farinacea De C*u«J. It. -u/J. (176*
Ad arborum corticem.



357. *Cowicularia I;ina[a sfrtiar. LicJu unip. p. Si~>, Lichnn iaantiit Linn.*
I« VogesoruDi six!) turnmi* inter muscos.

358, Coruicularui pnbescmff *Jchar. tick, univ- p. 616.*
Lichen pobwreju *Linn.*
Ad tii* irr?ju«.

359. Oprgraplifi epipasia *Abhor. Lich. ijniV. p. 218.*
Lichen opipamn *Achar, Prodr. Opegrapha dispant De Cand.*
IQ certico Ixri Tiha, Acort jEiditiqu* in »tuba?acrij.

360. Opcgraplig *sulcata* *Persoon* fe *Lilterm*

A reliquis differt, Drib "in « « niVJ A., bin. simplicibus sublinguis latero



361. *Graphis pulverulenta* ArUr. Lick, *nnfa* p. aG6.
Opegrapha pulverulenta Cand. Fl. gall. 844.
Ad .riiorom carucsm.

362. *Aidmii rafiata b. tt&troidca Achnr. Li h. unw. p. i j \-*

Opgraj»ha rartiiia hers- et D« Cun^l Fl. gall. 852.

a. ad. cauiticM Cirtint, b. Sarhi Anenparium.

b

563. *Verrucaria epidennMii* 'Actor. *Lich. unit.*, p. 476.
Lichen epidermic!" *Jchar. Prodr.*
In epidermide tenera *Uetulir albæ.*

364. *Verrucaria stlgraatellii* var. *tf*, et *e*. Achar, *Zirh. iinio.* p_k 277.
Var. *d*. (Verruc, Tremulie Achar,) habiat in conica Sorbi Ancuparits,
et v*p. *e*, (Vorruc. Miomarii Achar,) ad corticflm FrajfinJ, BotuJa, Populique.



36 5. Pyrenuk nitidn Achar. Monogr. in Berlin. M*g<tz. 1812 .p. 21.
Verreccarii nkida **w. Z'^'. ПУV. Ъ. 279.
In corticu Carpini «(Fagi.



I




306. *Calicium turliinawm Pert, et Achar. Lich. unh. p. 232.*
la arborm (ruacis.

367. Clyster] <?m qnpreinum *Pcr*\$. *Syn. Fung.* p. 100.

Hypoderma

Ad rimus juniures emonuoi *Quercus*.



368. *Hysteriuni gninirrtim Pers. in Liffcris.*
In c.almo arido Pute compressæ.

369. *Xyloma concentricum* Pers. **f** n. *Fung.* p. 107.
In foliis Populi Tremulae. **f** tumno.



370. Xyloma
betulinum *Funck* *Crypt. exsic.* *Mont. Pinifer.* 382.
In foliis *Betulae* albae. *Æstate* et *Autumno.*



*

Ad r»muloj emortuos Coryii.

57* *Sphaeria stigma Pers. Syn. Fung. p. 21.*
In ramuiU dejectii Cra(EL-gi Oxyacanthæ.

373. Splteria decoriicans Pert, in Zitt.
Sphaeria ni^ita vcr. t. decoriicata P<r>f. >n. #ng. p. 21.
Ad iimolo, |,utr<c<t< Fagi Quercusque.

374. *Sphaeria nummularia* De Cand. Fl. gall. 776.
Sphaeria orbicularis Pers. in Litt.
Hypoxyton nummularium Bull. Champ. p. 179. tab. 468. fig. 4.
Habitat in cortice Fagi languescentis.

375. *Sphaeria flavivittata* Pers. *Syn. Fung.* p. 22.
Ad ramos exsiccatos.

ZyQ. fphæria tfinosa Per. Sjn, Jfirng. p. 34.*
In ligno itidcTitO F^gi emortua.

377- 5jj) i^'n'i Arraṅnra Pers, ifyn. Fung. p, 33.
In Cory If A *elitax* figao puiuvf rattle.

378. Sphæria pvimsstil Pers, Syn, Fiutg. p. 37.
Ad rinioi nnarlnoj Pruni jpf^{nosc.}



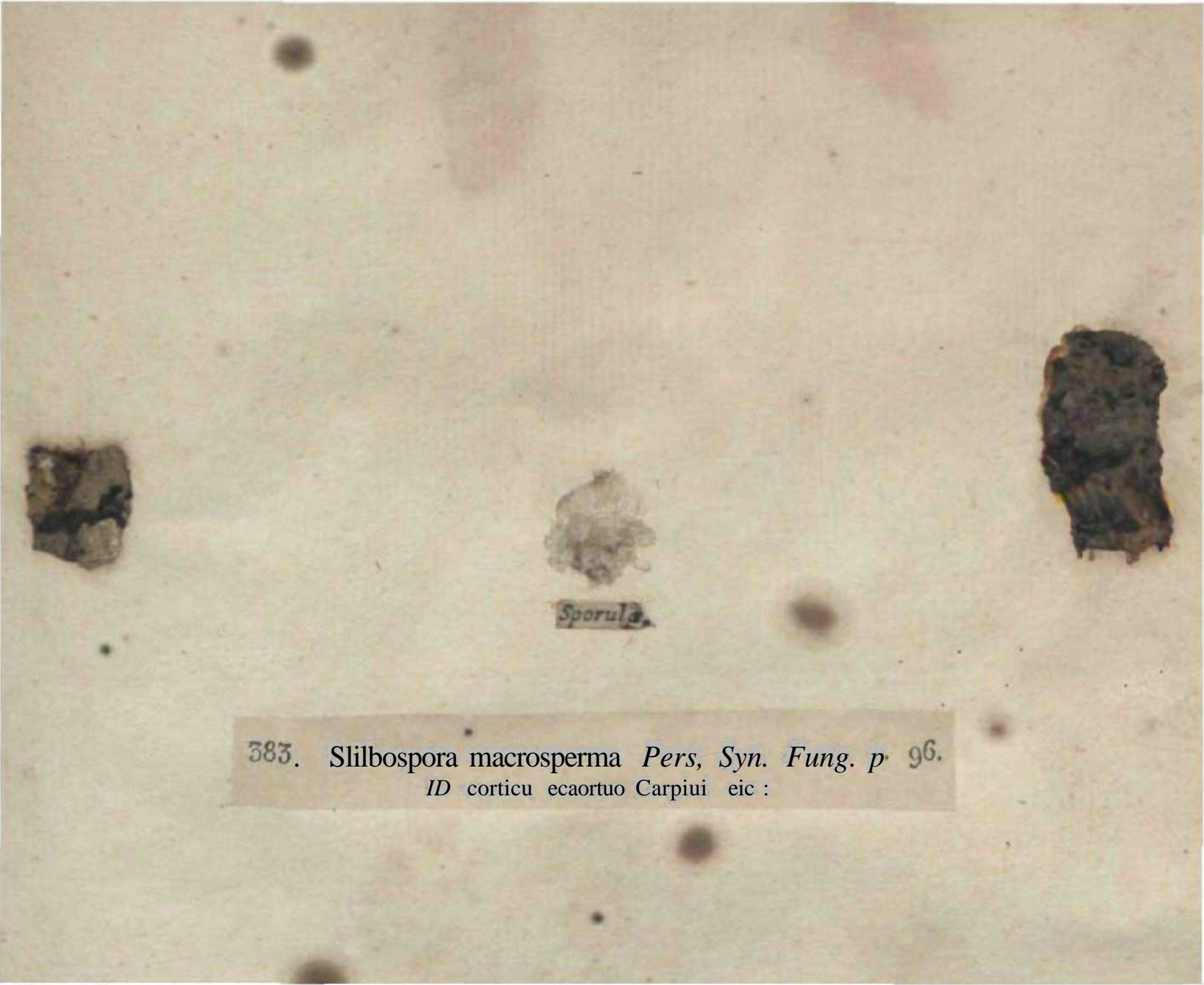
379. *Sphaeria gnomon* Pers. *Syn. Fung. p. 6t.*
In foliis deciduis Coryli Avellanæ, primo Vere.

380. *Sphaeria mammeiformis* Pers. Syn. Fung. p. 64.
Ad ligna exsiccata.



384. *Sphæria pulvis pyrius* Pers. *Syn. Fung.* p. 86.
In ligno et cortico Cōryli Avellanæ.

38a, *SplilCija* moiiiformis Pers. Syn. Fung, p- 86.
In r*iii i arbor um emortuis.



Sporula


383. *Slilbospora macrosperma* Pers, *Syn. Fung.* p 96.

ID corticu ecaortuo Carpiui eic :

Sporula

J84. Stilhospora a microsperma P_r-rs. Syn. Fang, p. 96.
In carlice Rhtmni Frangulae

385. Sclerotium p^qineum *Per**. $\%n$ - &"g. p. 125.



386. *Scleromyces salicinum* Pcrs. in *Litteris*.
ID Siltei* capres foliu tiocidai*. Vore.



387. *Tuloswma btvmak* Pas. Syr., *Fung. p.* 13g.

Lycoperdon perniciatum Linn.

In muscosis siccis et collibus herbidis. Autumno.

388. *Acidium Tragopogi* Pers. Syn. Fung. p. 211.
In caule et foliis *Tragopogi pratensis*. Aestate.



389. *Æcidium Urticæ* De Cand. Fl. gall. 655.,
la folia *Urticæ* dioicæ. Æstato.

Fig. Urcilo Tnssilaginis Pers. Syn. Fung. p. ai3
Ad foli* Tns;is;iiiiis Farii-ra?. Autumnu.





591. *Urtica Empetris.*
In & *Urtica Empetris.*
3. 2. *Pers. in*
nigri. Als
f fc

'\$*• iTucciniz Atparngi De Cand. fyn. Fl ga??. 58G. **'

In Asparagi caulibus emortuis. Hysue.



393. Merullii coroneopiola* Per* Syn. Furg. p. 49^r.
Fliiza corocopiofdM Zutn.
Ad orram in *y|TM *hietinit. Autntnno.

394

Threplelt(u,i fwrupinfa £V Cent], Tl gctf. :^

Th elnptior* rntiigino«3 Pert. Syn. luff. p. 567- ef L>tt?ris,*

Ad QUSKU ctttticA putridot.



395. Tremella spiculosa An. #n. Fung. p. 624.
Ad li^na- Autumn?.

396. TVmcTla OYtica; *Pen. Slyn. Fung.*, p. 628.
Ad caale» ariiti* UriiCie *dlaicm*, primo Vera.

397. *Peziza tuberosa* Bull. et Pers. Syn. Fung. p. 644.
In pascuis montosis, April.



398. Peiza an orphis Pers. Syn. Fung. p. 6*

d Abietis  e corticom.



399. *Peziza Abielis* Pert* *Syn> Fung- p* 671.*
Ail ramoi omurluot *Abietis.*

400. **R** **a** **c** **o** **i** **l** **r** **u** **j** **I** **P** **e** **r** **s** **S** **y** **n** **F** **u** **n** **g** **p** **7** **0** **1** **B** **y** **s** **s** **i** **g** **n** **a** **H** **u** **d** **s** **t** **r** **u** **p** **e** **s** **a** **r** **e** **u** **e** **s** **i** **n** **s** **y** **l** **v** **e** **s** **t** **r** **i** **s** **s** **i** **s**

κ



γ

BOOK CARD
Indian Botanic Garden Library
BOTANICAL SURVEY OF INDIA

Call No. ST-1-C.....Acc. No. B-10,122.....

Author..... Mougeot, J. B. & others

Title Stimpia cryptogamae Vogeso. Hb. nanae qmas in superiotis...

Name of library wet/Code No,	Date of Issue	Date of Return

9.B.G

INDIAN BOTANIC GARDEN LIBRARY
BOTANICAL SURVEY OF INDIA

